

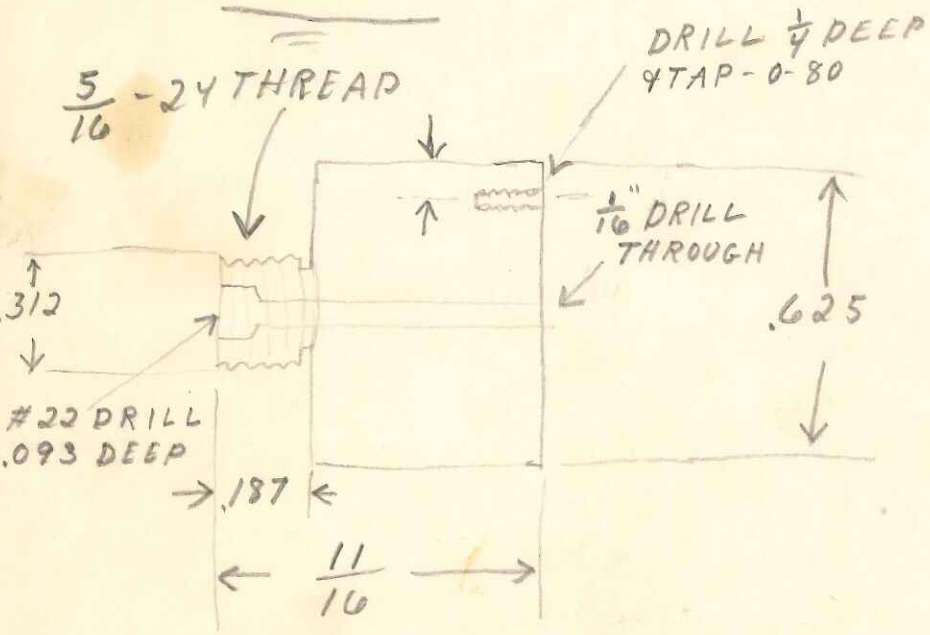
Omit

5

Piece Not
sure

3

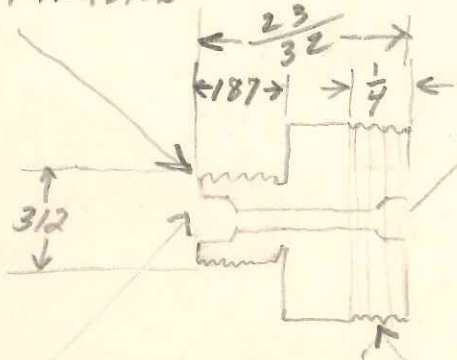
LUCITE



7-D

LUCITE

$\frac{5}{16}$ -24 THREAD



#22 (157) .093 DEEP

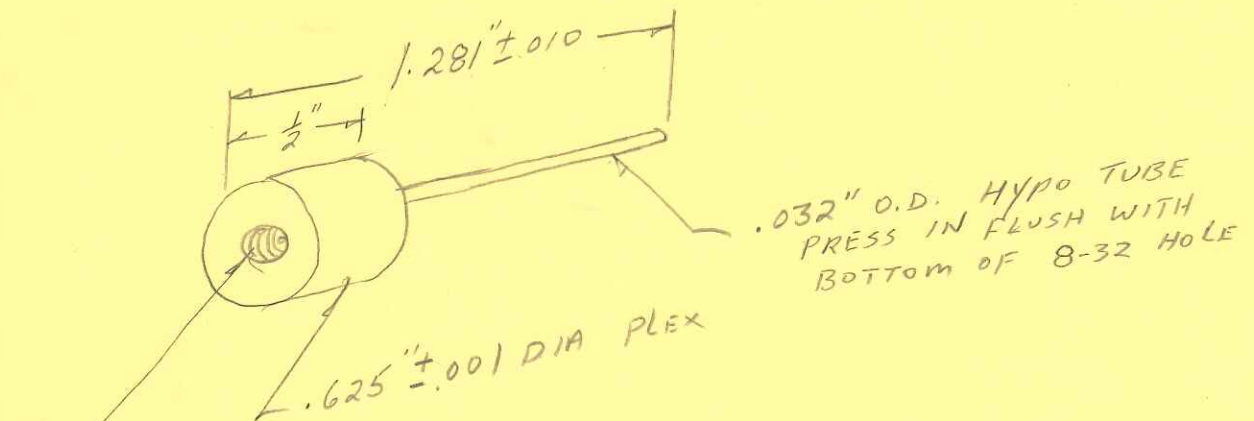
$\frac{1}{16}$ DRILL THROUGH
Y COUNTER DRILL
WITH #22 DRILL (157)
.093 DEEP.

$\frac{5}{8}$ -27 THREAD

5.0

Dr. GARCIA - AUSTT - 5-23-83

4 EXCHANGE Pipette holder -



1/32" DIA THRU (FOR PRESS FIT OF .032" DIA HYPO)
29 DRILL (FLAT BOTTOM)
X .200" DEEP ± .005
TAP 8-32 X 3/16" DEEP
USING TAP WITH ONLY
SLIGHT CHAMFER - DO NOT
HIT BOTTOM.